

A large industrial circular loom machine is shown in operation. A thick roll of fabric, with a white center and red outer edges, is being processed. The machine has a complex structure with many bobbins and threads. The background is a bright, hazy outdoor setting.

LOHIA / 洛喜雅

ace 6

Circular Looms / 圆织机

Together a Better Future

LOHIA

ace 6

Circular Looms

Lohia Machines (Dongguan) Co. Ltd. has a license for the technology & technical support from **LOHIA STARLINGER LIMITED**, India to manufacture processing machinery in China for woven plastic fabrics used in packaging applications.

LOHIA STARLINGER LIMITED has over 28 of years experience in designing, manufacturing & delivery of entire range of machinery for woven plastic fabric industry. They have delivered their equipment in over 60 countries and are a market leader in India. **LOHIA STARLINGER LIMITED** is credited with a number of innovations in the industry and has played a major role to establish a successful woven plastic fabric industry in India.

Lohia Machines (Dongguan) Co.Ltd. will be benefited with the experience of **LOHIA STARLINGER LIMITED** to bring latest state-of-the-art machinery & technology for customers in China.

Circular Loom model **ace6** with electronic control is specially designed to weave almost zero defect light fabric and is also suitable for a variety of other packaging applications viz. plastic granules, chemicals, fertilizers etc. and for covering fabrics including tarpaulin using polypropylene/polyethylene tapes either on their own or in blends with poly-olefins. This machine model from Lohia Machines (Dongguan) Co.Ltd. is the combination of latest technology from **LOHIA STARLINGER LIMITED** leading to following advantages:

- Higher Working Speed and Production
- Lower Energy Consumption
- Lower Running and Maintenance Cost
- Better Space Utilization
- Can Use Tapes made from Reprocessed PP/HDPE
- Rugged Construction For Long Life



INLET DRIVE WITH LOAD CELL
送料张力由配备负载传感器的入口滚筒控制

洛喜雅

ace 6

圆织机

洛喜雅机械（东莞）有限公司是获得印度洛喜雅·史太林格有限公司（**LOHIA STARLINGER LIMITED**）技术授权的中国公司，此公司是由印度洛喜雅·史太林格有限公司提供技术支持，在中国境内生产塑料编织机器。

洛喜雅史太林格有限公司在设计、制造、销售整套编织机械拥有28年的经验，不仅在印度成为该行业的主导，而且成功的将其业务扩展到全球60多个国家。经过不断的锐意改革创新，洛喜雅·史太林格有限公司被各界公认为印度编织工业的成功典范。

中国洛喜雅将受益于洛喜雅·史太林格有限公司的丰富经验，以最先进的技术造福中国的顾客。

配备电子控制器的 **ace6** 型圆织机，除用于编织完美的轻质织品外，还适宜编织塑料颗粒包装、化学品包装、肥料包装等。该款圆织机还能生产各种防水布，包括由聚丙烯、聚乙烯为原料的防水布或聚丙烯、聚乙烯添加聚烯烃复合材料为原料的防水布。由中国洛喜雅制造的圆织机是结合洛喜雅·史太林格有限公司最新技术和中国洛喜雅的先进制造技术而成，具有以下优点：

- 运行速度更快、产量更高
- 耗能低
- 维护成本低
- 节省空间
- 能使用再生料的PP/HDPE扁丝
- 结构坚固耐用



FABRIC WINDER WITH LOAD CELL
收卷张力由配备负载传感器的收卷机控制

ace 6

The tension of warp tapes is regulated via load cell type positive in-feed system, supplied as standard with the machine which produces fabric of improved quality. Speed of inlet rollers is regulated during weaving as per set tension. The surface winder for fabric also has a load cell assisted drive to ensure uniform winding tensions of the fabric throughout the build.

Micro-processor based controller system is used for setting various machine parameters as well as for indicating useful production data. Detailed information for shift wise as well as cumulative production, machine efficiency, actual running time with warp/weft breakage and weft end incidents can be obtained by the machine evaluation system.



MACHINE CONTROLLER
控制装置

经纱的张力由喂料系统中的负载传感器控制，可生产极高品质的编织物。送料滚筒的速度根据设定的张力在编织过程中自动调节，摩擦收卷机同样由负载传感器控制以确保编织物的张力均匀。

以微电脑控制为基础的系统设定机械的各种的生产参数，并显示各项生产数据；如每班生产信息、累计产量、机械效能、实际运转时间、经纬线的断线、纬线耗尽等信息都能从机械评估系统中获得。

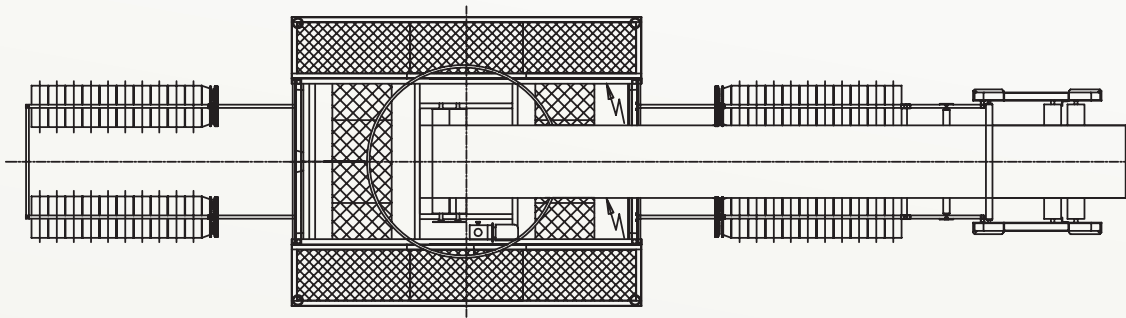
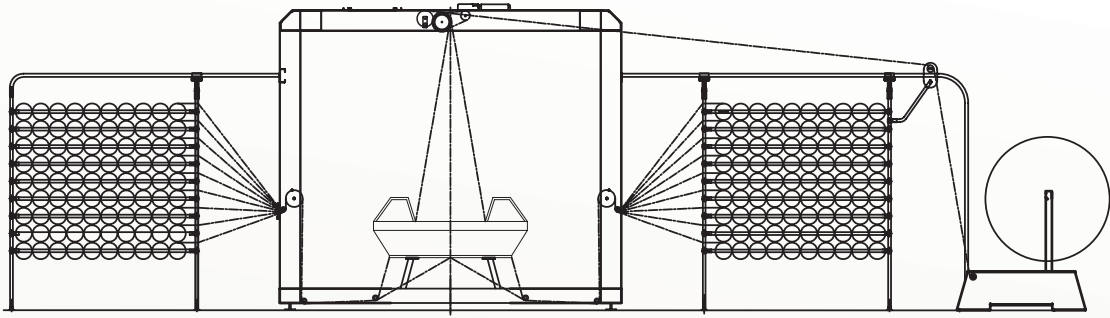
Optional Equipments:

- Movable creel stands
- Creel with 200 mm dia bobbins
- Gusseting device
- Fabric slitting device (Thermal/Ultrasonic)
 - Central / Double sided
- Fabric unfolding device
- Additional fabric surface winder
 - Standard width for tubular fabric
 - Wider width for single flat fabric

选配部件：

- 活动纱架
- ??为200MM纱锭的纱架
- ??边机构
- 编织物纵剪设备（热能的/超声波）
 - 中间的/两边的
- 编织物展开单元
- ??编织物摩擦收卷机
 - 标准宽度的卷布
 - 加宽幅度的平布





TECHNICAL SPECIFICATIONS / 技术参数

WORKING WIDTH / 工作宽度

Double flat / 双折	48 - 70 cm
Special version possible / 可供性	30 - 48cm, 70 - 85 cm*
No. of shuttles / 梭子数	6

CAPACITY / 生产能力

Weft insertion rate / 纬纱转速	1000 per minute*/每分钟
Weft density / 纬纱密度	20-60/10 cm
No. of tapes / 扁丝数量	720

WARP BOBBIN / 经纱纱管

Internal diameter / 内径	35 mm**
Length of core / 芯管长度	218 mm**
Max. bobbin diameter / 最大纱管直径	160 mm
Length of traverse / 往复长度	200 mm

WEFT BOBBIN / 纬纱纱管

Internal diameter / 内径	35 mm**
Length of core / 芯管长度	218 mm**
Max. bobbin diameter / 最大纱管直径	115 mm
Length of traverse / 往复长度	200 mm

CREEL CAPACITY / 纱架负载量

Bobbins per machine / 纱管数量	720
----------------------------	-----

FABRIC WINDER / 编织物收卷机

Max. roll diameter / 最大收卷直径	1500 mm
-----------------------------	---------

SPACE REQUIRED PER MACHINE / 安装机械的空间要求

Length x Width x Height / 长x宽x高	10.4 m x 2.8 m x 3 m
Centre to centre / 中心对中心	2.2 m

*Depends on fabric size, construction and tape specifications

**Special versions on request

Specifications are subject to change without prior notice due to continuous developments.

These details are indicative and not binding.

Extreme values indicated are not achievable simultaneously.

The pictures may show optional equipments that are not a part of the standard supply. For details, refer to quotation.

*取决于编织物尺寸、构造及扁丝规格

**可供性特殊的规格

由于本产品仍将持续开发,规格如有变更,恕不另行通知。

上述规格细节仅为指标性数据,仅供参考。

所标明的最大值不可同时达到。

图片所示可供选购的设备不属于标准供应品。详情资料请参考报价单

LOHIA MACHINES(DONGGUAN)CO. LTD

The 5th, Yantang Road, 188 Industrial Zone PingShan,
Tangxia, Dongguan City, Guangdong Province, China, ZIP: 523710
Tel: +86-769-82611611 • Fax: +86-769-82611600 • E-mail: sales@lohiachina.com
www.lohiachina.com

洛喜雅机械(东莞)有限公司

中国广东省东莞市塘厦镇平山188工业区沿塘路5号 邮编: 523710
电话: +86-769-82611611 传真: +86-769-82611600 电子邮箱: sales@lohiachina.com
www.lohiachina.com